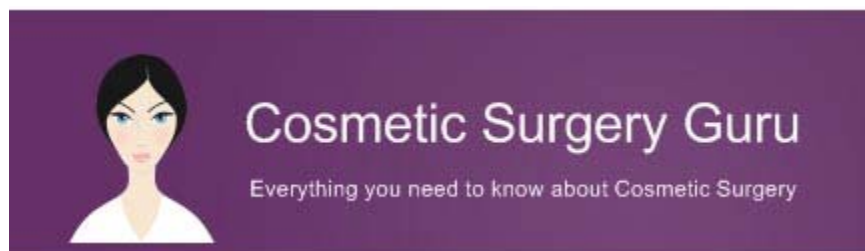


Saline and Silicone Breast Enhancement: Which One Should Patients Choose?



Released on: February 24, 2010, 7:50 am

Author: [Cosmetic Surgery Guru](#)

Industry: [Healthcare](#)

Manchester, UK -- Patients interested in [undergoing breast enhancement surgery](#) will eventually make the choice between saline and silicone implants. There was some concern surrounding saline implants in the 1990s over health issues in women. However, after extensive research and testing, there was no connection established. Currently, doctors and patients still have a choice between the two materials, and while the physician may make a recommendation, patients still need to consider the pros and cons of each to make their decision.

Made of a silicone shell and filled with non-toxic silicone gel, the manufacturer fills silicone implants to a specific size and seals them. The outer shell is available in a number of different textures, sizes, shapes, colours, and thicknesses to help doctors produce results as close to natural tissue as possible. It's important to note, however, that this style requires a large incision below the breast for installation, and once in place, are not adjustable.

Saline implants are made from the same shell as silicone breast implants, but are filled with [saline solution \(saltwater\)](#) instead of silicone gel. These may come prefilled by the manufacturer, or unfilled, which are installed using a small incision in the belly button, around

the areola, under the arm, or under the breast. Once in place, the doctor fills them to the desired size and seals them. Adjustments can be made to the firmness and size afterward with a minor surgery.

Patients report saline breast implants feel hard and more like a water balloon. However, advancements in surgical techniques allow plastic surgeons to offset this somewhat by placing the implant behind the chest muscle and/or slightly overfilling the implant.

Plastic surgeons warn patients that both styles carry a number of risks, some of which may require additional surgeries to correct. Some of these risks include infection, permanent damage, breast pain, and excess scar tissue. Both type of implant also carry the risk of rupture. Leakage of saline implants is noticeable because they deflate almost instantly. Silicone implants may leak and collect in the surrounding tissue, and therefore they can go unnoticed. Patients should also know that both styles of implant can potentially interfere with the detection of breast cancer.

Regardless of the fact there's not one clear choice that suits every patient, breast enhancement remains one of the most popular cosmetic treatments for beautification and reconstruction purposes. Until the ideal solution is discovered, patients will need to weigh the pros, cons and options carefully to determine which one will meet their needs the best.

Contact Details: Mike Brains
3 Castle Street
Manchester
M3 4LZ
01619309000

<http://www.cosmeticsurgeryguru.com/>
admin@cosmeticsurgeryguru.com

~~~~~

Press release distributed via EPR Network (<http://express-press-release.net/submit-press-release.php>)